



K-Botics, Team 2809

www.kbotics.ca

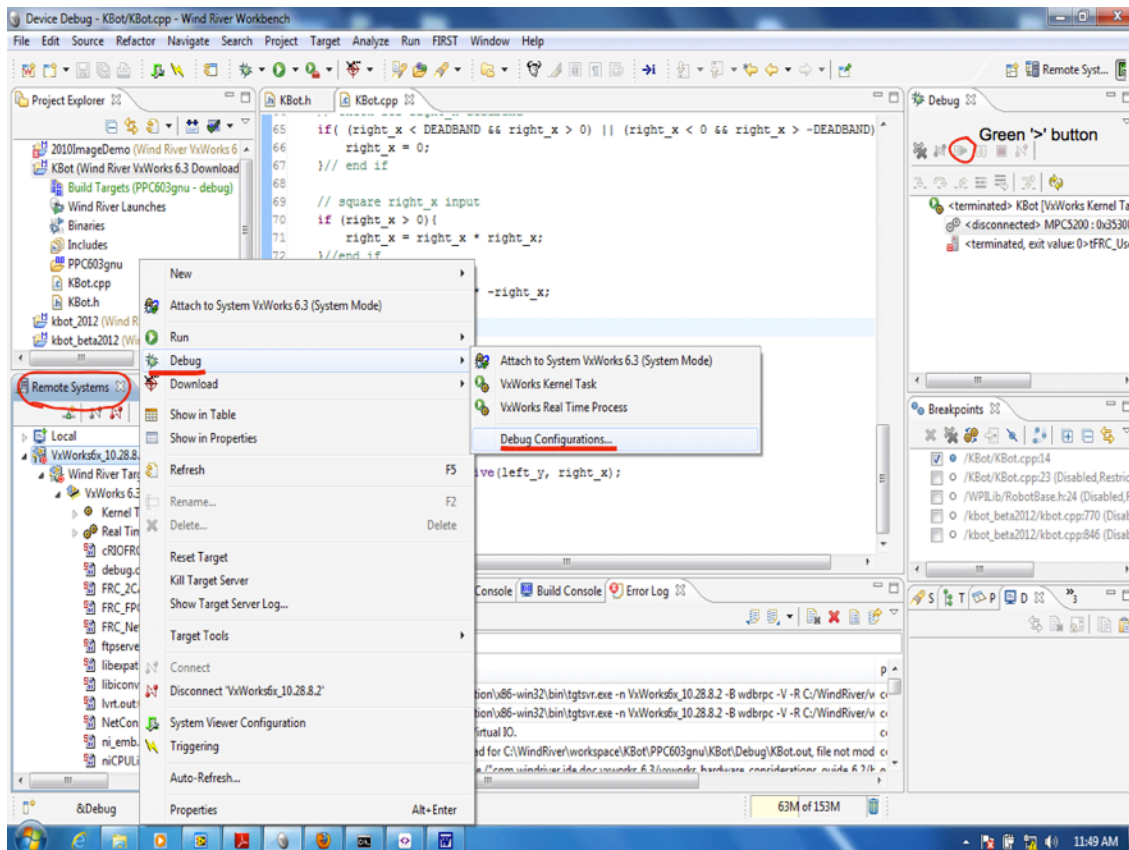
Making the debugger connect to spawned tasks in Wind River.

When using Wind River, by default the debugger does not attach to all the tasks. When you press the green ">" on the top of the debug panel at the top right of the interface (see screen shot below), the debugger will read 'disconnected' and you will not hit any of your breakpoints.

The way to solve this problem is to access the debug configuration from the Remote Systems panel as follows:

- right click on the target (vxWorks6x_10...) in the "Remote Systems" panel
- select "Debug >" from the pop-up menu
- from the sub-menu select "Debug Configurations.."
- scroll down check off "Automatically attach spawned Kernel tasks" (see screen shot below).

Now when you debug, several tasks will show in the Debug panel, including your tasks.





K-Botics, Team 2809

www.kbotics.ca

Making the debugger connect to spawned tasks in Wind River.

